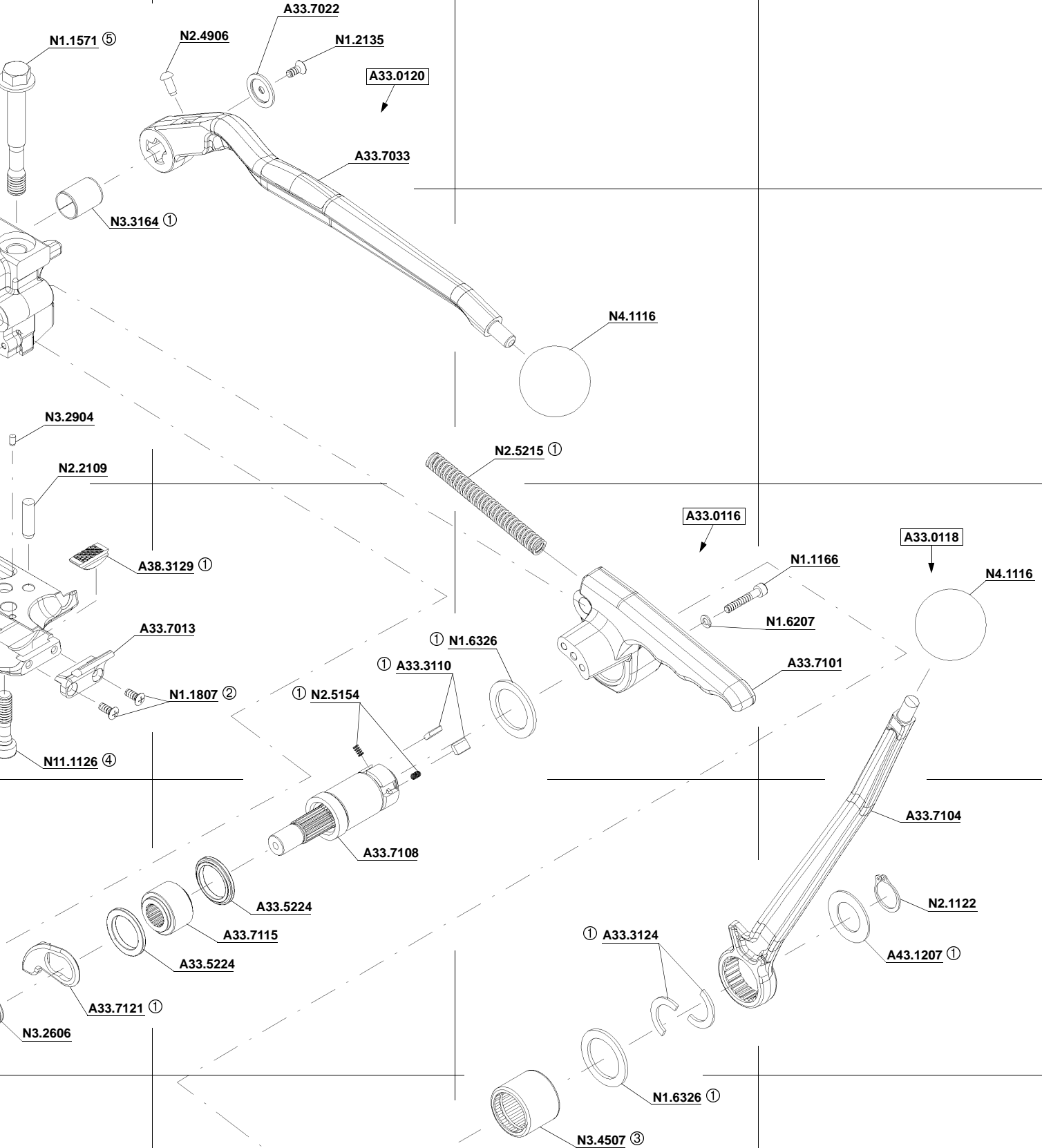


4

5

6

7



- ① ESSO Beacon 2
- ② Loctite 222
- ③ Orientation
- ④ 90 Nm
- ⑤ 110 Nm

8 SPARE PARTS LIST 13.1912.01

13.1912.01	A337/19/0.50-0.63		A337.0001.01		29.02.00	
Item-No.		in group	Pcs.	Description	Dimension	Field
[A33.0105]			1	BEARING PICK-UP ATTACHMENT		B2
[A33.0114]			1	SEALING HOUSING		A4
[A33.0115]			1	DIE AND CUTTER SUPPORT		B2
[A33.0116]			1	ROCKER		C6
[A33.0117]			1	END COVER		D3
[A33.0118]			1	TENSION HANDLE		C7
[A33.0120]			1	SEALING HANDLE		A5
A33.3110			2	TENSIONING PAWL		C5
A33.3124			2	RING HALF		D6
A33.5108	*		1	PUNCH		C3
A33.5115	*		1	DIE HALF		C3
A33.5116	*		1	DIE HALF		C3
A33.5117			1	ROLLER		B3
A33.5118			1	PARALLEL PIN		C2
A33.5121			1	EYE		B2
A33.5122		A33.0105	1	BEARING PICK-UP ATTACHMENT		B2
A33.5127			1	EJECTOR SCREW		D4
A33.5224			2	SPACER RING		D5
[A33.7001]		A33.0114	1	SEALING HOUSING		B4
A33.7003		A33.0115	1	DIE AND CUTTER SUPPORT		B3
A33.7007			1	BASE PLATE		C4
A33.7013			1	HOLDER		C5
A33.7016	*		1	CUTTER		C3
A33.7017			2	GUIDE GIB		B3
A33.7018			1	ECCENTRIC SHAFT		B3
A33.7019			1	GUIDE GIB		C2
A33.7020			1	GUIDE GIB		C2
A33.7021			1	SIDE PLATE		C2
A33.7022			1	COVER DISK		A5
A33.7023			1	EJECTOR		A3
A33.7029			1	STRAP STOP		A3
A33.7032			1	EJECTOR		D4
A33.7033		A33.0120	1	SEALING HANDLE		A5
[A33.7101]		A33.0116	1	ROCKER		C7
A33.7103		A33.0117	1	END COVER		D3
A33.7104		A33.0118	1	TENSION HANDLE		D7
[A33.7108]			1	TENSION SHAFT		D5
A33.7115	*		1	TENSIONING WHEEL		D5
A33.7121			1	STRAP GUIDE		D4
A38.3129	*		1	GRIPPER		C5
A38.3210			1	PIVOT PIN		D3
A43.1207			1	DISK		D7
N11.1126			1	SCREW	M10 X 1 X 39	C4
N1.1106			1	SCREW	M6 X 20	E2
N1.1166		A33.0116	1	SCREW	M5 X 30	C7
N1.1304			2	SCREW	M3 X 8	C4
N1.1571			2	HEXAGON SCREW	M12 X 1.25 X 90	A4
N1.1806			4	SCREW	M4 X 10	C3
N1.1807			5	SCREW	M5 X 12	A3+
N1.1912			6	FLAT HEAD SCREW	M5 X 16	D1
N1.2135			1	COUNTERSUNK SCREW	M5 X 12	A5

[] = Group

* = Wearing parts

13.1912.01	A337/19/0.50-0.63		A337.0001.01			29.02.00
Item-No.		in group	Pcs.	Description	Dimension	Field
N1.3513			1	SOCKET SET SCREW	M10 X 40	B4
N1.6203			2	SPRING LOCK WASHER	M3	C4
N1.6207		A33.0116	1	SPRING LOCK WASHER	M5	C7
N1.6220			1	SPRING LOCK WASHER	M6	E3
N1.6326			2	SUPPORTING DISK	30 X 42 X 2.5	C6+
N1.6503			6	SAFETY WASHER	M5	C2
N2.1122			1	SECURITY RING	E21	D7
N2.2109			2	PARALLEL PIN	8 m6 X 30	B4
N2.2110		A33.0115	2	PARALLEL PIN	4 m6 X 10	C3
N2.2138			1	PARALLEL PIN	4 m6 X 12	B4
N2.2147			1	PARALLEL PIN	3 m6 X 10	C4
N2.2172		A33.0117	2	PARALLEL PIN	5 m6 X 30	E3
N2.4902			2	HAMMER HEAD BOLT	1.85 X 4.76	C1
N2.4906		A33.0120	1	HAMMER HEAD BOLT	5,31 X 12,7	A5
N2.5154			2	PRESSURE SPRING	0.45 X 3.9 X 7	C5
N2.5215			1	PRESSURE SPRING	2,25X11,75X125	B6
N3.2348		A33.0117	1	NEEDLE CASE		E4
N3.2606		A33.0117	1	PACKING RING		D4
N3.2904			1	PIN	4 X 8	B4
N3.3160		A33.0105	1	SLIDE-BEARING		B2
N3.3160		A33.0115	2	SLIDE-BEARING		B2+
N3.3164		A33.0114	1	SLIDE-BEARING		B4
N3.4507		A33.0116	1	NEEDLE FREE WHEELING		E6
N41.9128			1	ADHESIVE LABEL		C2
N4.1116		A33.0118	1	GRIP BALL		C7
N4.1116		A33.0120	1	GRIP BALL		B6
N4.1411			1	SOCKET WRENCH	5 mm	--
N4.9152			1	NUMBER PLATE	A337	C1